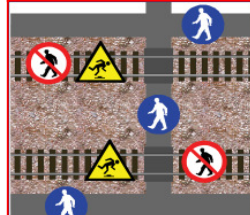




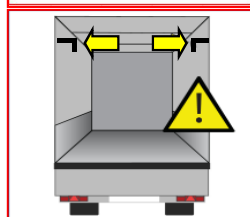
Please put on warning clothes and sturdy shoes!



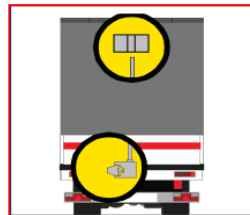
Keep away from adjacent railway tracks, don't cross tracks - serious danger!



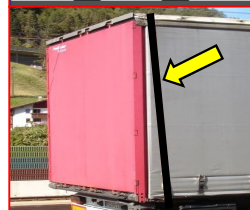
Keep distance of min. 3 meters from buffers & couplings as well as high voltage constructions - serious danger!



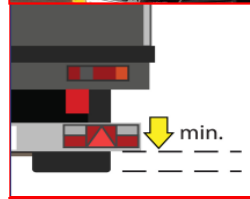
Tarpaulin and tarpaulin-sliding-roof closed and locked



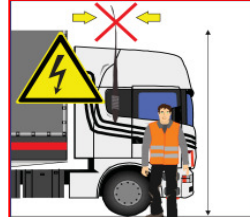
Rear doors of semi-trailer closed and locked



ROLA Wörgl-Brenner v.v. with belt on the rear side of the semi trailer

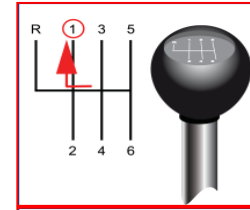


In parking position on the wagon air-suspension lowered



Truck-aerial up to max. truck-height of 4.0 m or removed

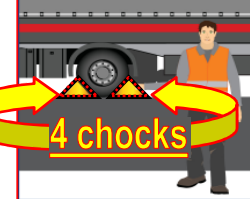
Well fitted air deflectors on the cabin



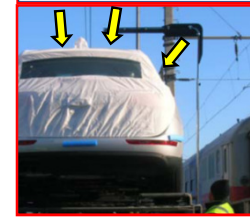
Truck: engage 1st gear



Spring-operated brake or hand brake put on



Secure your truck with 4 wheel chocks



Car transporter only: protection foils of the cars checked and fixed if necessary

The truck driver confirms with his signature, when leaving the truck on the train, that the safety-rules according to this check list are fulfilled, the requirements have been understood and that he saw the safety film.

Wörgl > Brennersee
Brennersee > Wörgl

Wörgl > Trento

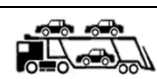
train number /
booking number _____



semi-trailer



trailer



car transporter

company, town _____

name 1st driver _____

truck plate number _____ / _____

name 2nd driver _____

loaded goods _____

total weight
truck + load _____

date _____

ADR-hazardous goods

yes no

signature _____